



Shepherdess Walk, Shoreditch, N1

BUTLER  STAG





Welcome to this stunning two-bedroom plus study loft apartment located in the heart of Shoreditch, London. Situated on Shepherdess Walk, this Victorian property boasts a perfect blend of historical charm and modern living, this high-quality property is perfect for those seeking a stylish urban lifestyle in one of London's most vibrant neighbourhoods. Whether you're a young professional looking to immerse yourself in the trendy Shoreditch scene or a couple searching for a cosy abode to call home, this apartment is sure to captivate your heart.



- Victorian Loft Apartment
- Two Bedrooms & Study
- Close To Shoreditch, Angel & Clerkenwell
- Regents Canal & Shoreditch Park
- High End Contemporary Finish
- Over 1,000 Sq. Ft.
- Old Street Station Nearby
- Furnished

Finished to an extremely high standard with no expense spared, the property boasts solid wood flooring throughout, high ceilings, large factory windows and doors and exposed brick work. Comprising a large living/entertaining space, separate high end German kitchen with Miele integrated appliances, two double bedrooms, study, stylish bathroom and separate w/c.

Located just moments from the creative and tech hub of Old Street, yet within easy reach of Angel's Upper Street, Vibrant Hoxton and Shoreditch, Clerkenwell and The City. A number of bars and eateries can be found along the nearby Regent's Canal and the open green spaces of Shoreditch Park are also close by. Ideally located for a number of transport links including Old Street station (Northern Line & National Rail) offering swift and direct links to the City and West End.



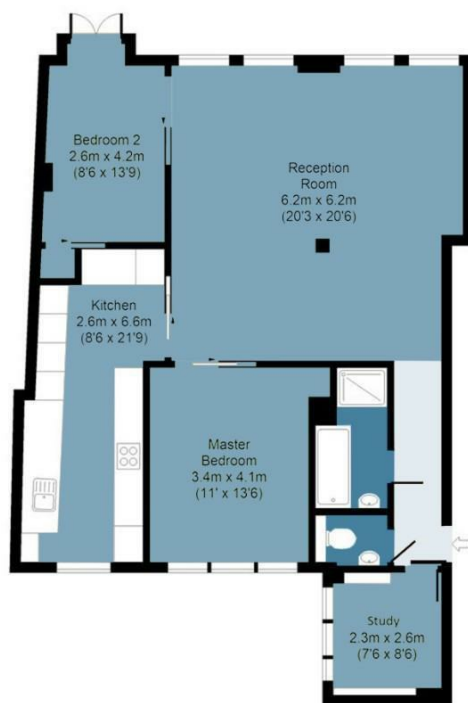




## Shepherdess Walk

Approx. Gross Internal Area 100 Sq M ( 1071 Sq Ft )

BUTLER & STAG



Measurements are approximate and for illustration purposes only. While we do not doubt the accuracy and completeness, we advise you conduct a careful independent assessment of the property to determine monetary value.  
© @modephoto.uk www.modephoto.co.uk

IMPORTANT NOTICE - These particulars have been prepared in good faith and they are not intended to constitute part of an offer or contract. We have not performed a structural survey on this property and the services, appliances and specific fittings have not been tested. All photographs, measurements, floor plans and distances referred to are given as a guide and should not be relied upon.

BUTLER & STAG

☎ 020 8102 1236

🏠 508 Roman Road, Bow, London, E3 5LU

✉ bow@butlerandstag.com

[www.butlerandstag.uk](http://www.butlerandstag.uk)